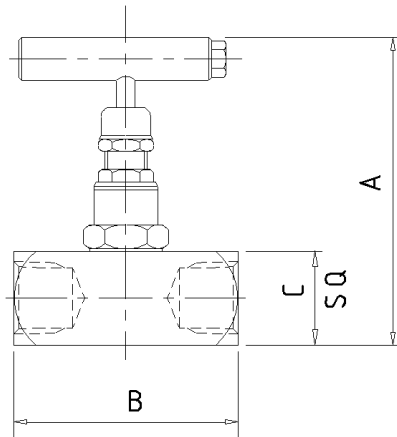


**Product Data Sheet** **F Type Needle Valve**



The 'F' Type Single Isolating Needle Valve is designed for safe and reliable isolation giving bubble tight shut off, non-rotating & anti-galling tip and dynamic self-adjusting spindle seal to give long service life in a variety of applications.

Part No.	Connections Size	A	B	C	Weight (Kgs)
F25	1/4"	3.6	2.1	1.1	0.5
F38	3/8"	3.6	2.4	1.1	0.5
F50	1/2"	3.6	2.6	1.1	0.5
F75	3/4"	3.6	2.9	1.5	0.8
F10	1"	3.6	3.2	2.0	1.4

**Key Features of the Oliver Needle Valve range**

- Non rotating tip - self centering & anti-galling
- Piston ring - gives dynamic adjustment of gland seal in response to pressure change
- Anti-blow out spindle - a major safety feature
- Secure seal - precision machined to give leak free operation for the life of the valve. Available in either PTFE or Grafoil

**Standard Specification**

Pressure: 6000psi	Packing: PTFE	Handle: T-Bar	Bore: 0.21" (5.4mm)
Temp: 240 deg C	Thread form: NPT	Seat: Metal to metal	CV: 0.46

**Ordering Code**

(Typical example) → **F** **50** **S** / **BT** / **AT**

**Type**  
Female x Female

**Size**  
25 - 1/4"    75 - 3/4"  
38 - 3/8"    10 - 1"  
50 - 1/2"

**Material**  
S - 316S31 Stainless Steel  
C - 230M07 Carbon Steel  
M - Monel (400)  
HC - Hastalloy (C276)  
(Others available)

**Optional Connections (NPT Standard)**  
BT - BSP Taper  
BP - BSP Parallel (top sealing)  
SW - Socket Weld

**Options**  
AG - Grafoil  
AT - Anti-Tamper  
HL - Handle Locking  
HL PI - Handle Locking + Position Indicator  
HP - 10000 psi  
HW - Hand Wheel  
LT100 - Cryogenic Head Unit (-100°C)  
LT200 - Cryogenic Head Unit (-200°C)  
MT - Metering Tip  
MTG - Mounting Holes x 2  
NA - NACE MR-01-75 (latest revision)  
OXY - Oxygen Cleaned  
PK - PEEK Soft Tip (not available oxygen cleaned)  
PM - Panel Mount